

BUSTLE-TOWNE APARTMENTS

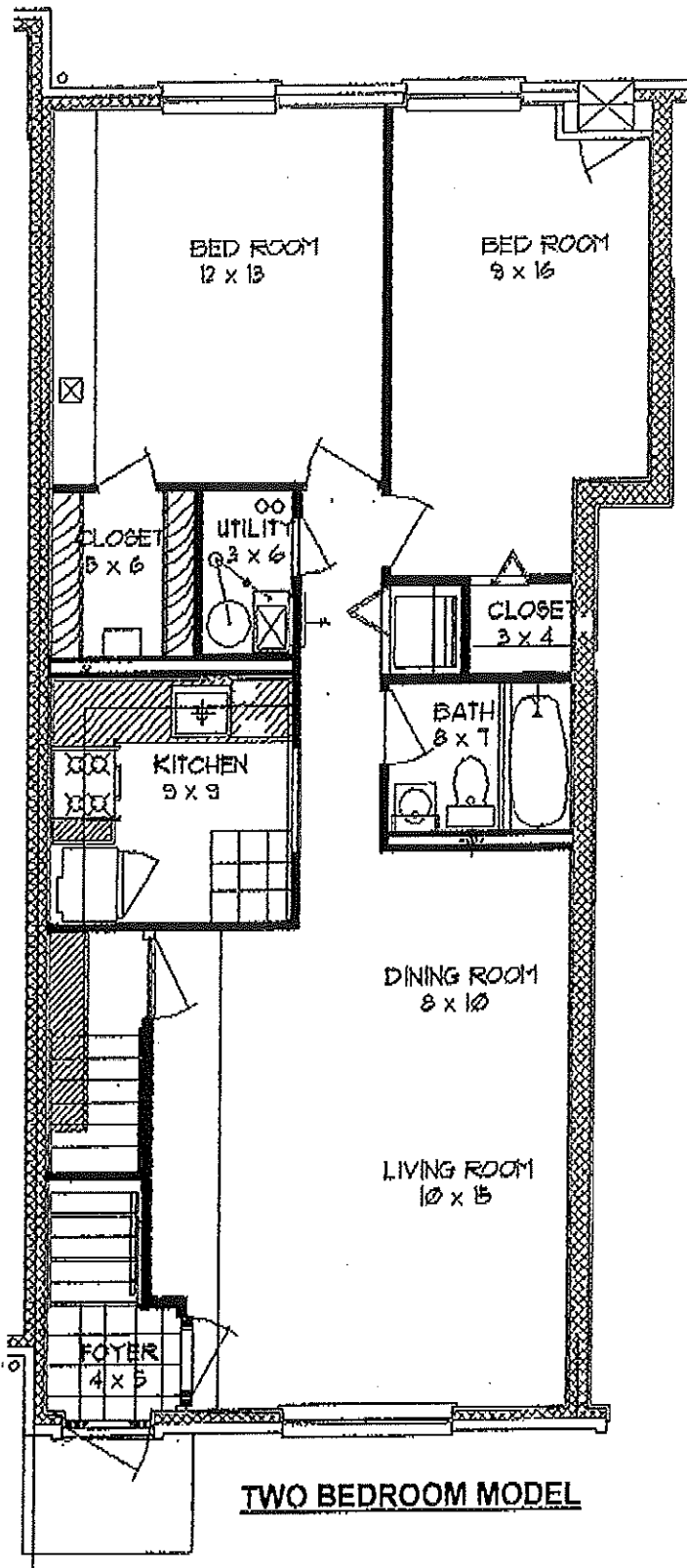
9101 Old Bustleton Avenue

Features

- Gas Heat and Hot Water – Individually Controlled
- Central Air Conditioning
- Refrigerator -Two Door
- Garbage Disposal
- Gas Range and Hood
- Dishwasher
- Hot Point Washer and Dryer
- Fire Resistant and Sound Proofing Concrete Between Floors
- All Masonry Walls Between Apartments
- Wall to Wall Carpet Throughout
- Full Ceramic Tile Baths w/ Large Wall Mirror
- Master T.V. Antenna Outlets
- Off Street Parking Lot
- Shopping Centers, Schools, Churches of All Denominations in Immediate Area
- Shades and Screens
- Private Entrances

OFFICE

HOURS: Daily 10:00am - 4:00pm
2200 Michener Street
Philadelphia, PA 19115
215-676-4507



TWO BEDROOM MODEL